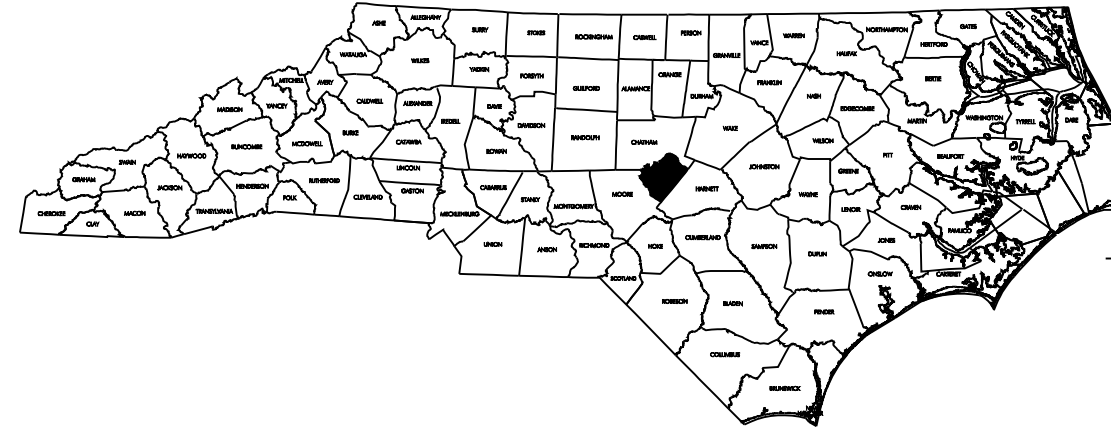


**CONTRACT NO. D000048 TIP PROJECT: B-4700AW**

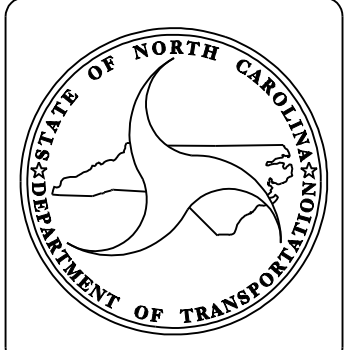
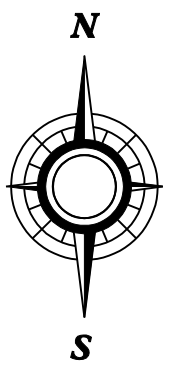
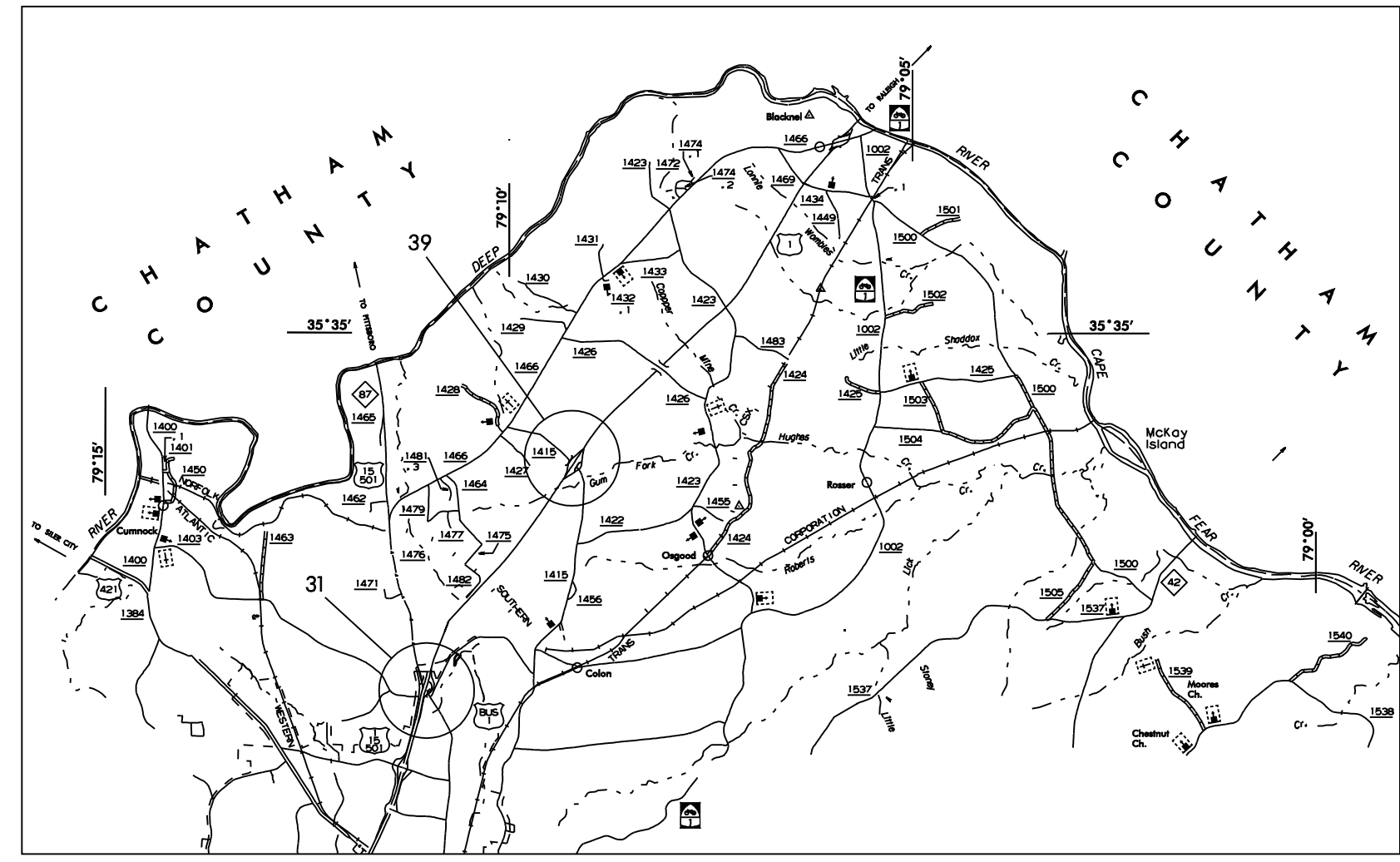


STATE OF NORTH CAROLINA  
DIVISION OF HIGHWAYS

**LEE COUNTY**

**LOCATION: US 1/5501, US 1, ACROSS SR 1415  
TYPE OF WORK: BRIDGE PRESERVATION: CLEANING  
AND PAINTING OF BRIDGES #31, & #39  
IN LEE COUNTY.**

STATE	STATE PROJECT REFERENCE NO.	SHEET NO.	TOTAL SHEETS
N.C.	B-4700AW	1	1
STATE PROJ. NO.	F.A. PROJ. NO.	DESCRIPTION	
36727.1.1	BRNHS-000S(504)	P.E.	
36727.3.47	BRNHS-000S(370)	CONST	



**DESIGN DATA**

**PROJECT LENGTH**

Prepared In the Office of:  
**BRIDGE MANAGEMENT UNIT**  
NORTH CAROLINA DEPARTMENT OF TRANSPORTATION  
2006 STANDARD SPECIFICATIONS

**LETTING DATE:**  
MARCH 18, 2010

**DAN HOLDERMAN, PE**  
STATE BRIDGE  
MANAGEMENT ENGINEER

**MIKE SUMMERS**  
BRIDGE MANAGEMENT  
PROJECT MANAGER

NORTH CAROLINA  
PROFESSIONAL  
SEAL  
20208  
02/0410  
ENGINEER, JR.  
ERIC B. NELSON, JR.

**RICK NELSON, PE**  
DESIGN ENGINEER

2/18/2010  
 Us:\TrafficControl\B-4700AW Lee\TCP\Plan Sheets\B-4700AW\_tcp\_psh\_01.dgn  
 kwieskamp

WBS 36727.3.47

TIP PROJECT: B-4700AW

STATE OF NORTH CAROLINA  
 DIVISION OF HIGHWAYS

PLAN FOR PROPOSED  
 TRAFFIC CONTROL

LEE COUNTY

LOCATION: BRIDGE NO.S 31 AND 39.

TYPE OF WORK: TRAFFIC CONTROL FOR BRIDGE PAINTING

STATE PROJECT REFERENCE NO.	SHEET NO.
B-4700AW	TCP-1

**ROADWAY STANDARD DRAWINGS**

THE FOLLOWING ROADWAY STANDARDS AS APPEAR IN "ROADWAY STANDARD DRAWINGS" - PROJECT SERVICES UNIT - N.C. DEPARTMENT OF TRANSPORTATION - RALEIGH, N.C., DATED JULY 2006 ARE APPLICABLE TO THIS PROJECT AND BY REFERENCE HEREBY ARE CONSIDERED A PART OF THESE PLANS:

STD. NO.	TITLE
1101.02	TEMPORARY LANE CLOSURES
1101.04	TEMPORARY SHOULDER CLOSURES
1101.11	TRAFFIC CONTROL DESIGN TABLES
1110.02	PORTABLE WORK ZONE SIGNS
1115.01	FLASHING ARROW PANELS
1130.01	DRUMS
1135.01	CONES
1150.01	FLAGGING DEVICES
1165.01	TRUCK MOUNTED IMPACT ATTENUATOR
1180.01	SKINNY-DRUM

**INDEX OF SHEETS**

SHEET NO.	TITLE
TCP-1	LIST OF APPLICABLE ROADWAY STANDARD DRAWINGS, LEGEND, AND INDEX OF SHEETS
TCP-2	GENERAL NOTES
TCP-3	VICINITY MAP AND PROJECT PHASING
TCP-4	DETAIL FOR TREATMENT OF RIGHT LANE CLOSURES ON US 15/501 USING STOP CONTROL ON ENTRANCE RAMP
TCP-5	DETAIL FOR 2-LANE, 2-WAY LANE CLOSURES ON US 15/501

**LEGEND**

- GENERAL**
- DIRECTION OF TRAFFIC FLOW
  - NORTH ARROW
  - WORK AREA

**TRAFFIC CONTROL DEVICES**

- TYPE III BARRICADE
- CONE
- DRUM SKINNY DRUM
- FLASHING ARROW PANEL (TYPE C)
- STATIONARY SIGN
- PORTABLE SIGN
- STATIONARY OR PORTABLE SIGN
- PORTABLE CONCRETE BARRIER
- TEMPORARY CRASH CUSHION
- CHANGEABLE MESSAGE SIGN
- TRUCK MOUNTED IMPACT ATTENUATOR (TMIA)
- POLICE
- FLAGGER

APPROVED: <i>Betsy L. Watson</i> DATE: 2/19/2010 	PLAN PREPARED BY:  Betsy L. Watson, PE Kellie L. Wieskamp, EI	Stantec Consulting Services Inc. Suite 300, 801 Jones Franklin Road Raleigh, NC 27606 Tel. 919.851.6886 Fax. 919.851.7024 www.stantec.com TRAFFIC CONTROL ENGINEER TRAFFIC CONTROL DESIGNER
---	--	--

## GENERAL NOTES

CHANGES MAY BE REQUIRED WHEN PHYSICAL DIMENSIONS IN THE DETAIL DRAWINGS, STANDARD DETAILS AND ROADWAY DETAILS ARE NOT ATTAINABLE TO MEET FIELD CONDITIONS, OR RESULT IN DUPLICATE, OR UNDESIRED OVERLAPPING OF DEVICES. MODIFICATION MAY INCLUDE: MOVING, SUPPLEMENTING, COVERING OR REMOVAL OF DEVICES, AS DIRECTED BY THE ENGINEER.

THE FOLLOWING GENERAL NOTES APPLY AT ALL TIMES FOR THE DURATION OF THE CONSTRUCTION PROJECT, EXCEPT WHEN OTHERWISE NOTED IN THE PLAN, OR DIRECTED BY THE ENGINEER.

### LANE CLOSURE TIME RESTRICTIONS

A) DO NOT CLOSE OR NARROW TRAVEL LANES AS FOLLOWS:

ROAD NAME	DAY AND TIME RESTRICTIONS
US 15/501/ US 1 BUS.	6:00 A.M.-7:00 P.M. MONDAY THRU FRIDAY
SR 1415 COLON RD.	6:00 A.M.-9:00 A.M. MONDAY THRU FRIDAY AND 4:00 P.M.-7:00 P.M. MONDAY THRU FRIDAY

B) DO NOT CLOSE OR NARROW TRAVEL LANES DURING HOLIDAYS AND SPECIAL EVENTS AS FOLLOWS:

ROAD NAME  
ALL ROADS

#### HOLIDAY

- 1) FOR ANY UNEXPECTED OCCURRENCE THAT CREATES UNUSUALLY HIGH TRAFFIC VOLUMES, AS DIRECTED BY THE ENGINEER.
- 2) FOR NEW YEAR'S, BETWEEN THE HOURS OF 7:00 P.M. DECEMBER 31st to 6:00 A.M. JANUARY 2nd. IF NEW YEAR'S DAY IS ON A FRIDAY, SATURDAY, SUNDAY, OR MONDAY THEN UNTIL 6:00 A.M. THE FOLLOWING TUESDAY.
- 3) FOR EASTER, BETWEEN THE HOURS OF 7:00 P.M. THURSDAY AND 6:00 A.M. MONDAY.
- 4) FOR MEMORIAL DAY, BETWEEN THE HOURS OF 7:00 P.M. FRIDAY TO 6:00 A.M. TUESDAY.
- 5) FOR INDEPENDENCE DAY, BETWEEN THE HOURS OF 7:00 P.M. THE DAY BEFORE INDEPENDENCE DAY AND 6:00 A.M. THE DAY AFTER INDEPENDENCE DAY. IF INDEPENDENCE DAY IS ON A FRIDAY, SATURDAY, SUNDAY OR MONDAY; THEN BETWEEN THE HOURS OF 7:00 P.M. THE THURSDAY BEFORE INDEPENDENCE DAY AND 6:00 A.M. THE TUESDAY AFTER INDEPENDENCE DAY.
- 6) FOR LABOR DAY, BETWEEN THE HOURS OF 7:00 P.M. FRIDAY AND 6:00 A.M. TUESDAY.
- 7) FOR THANKSGIVING DAY, BETWEEN THE HOURS OF 7:00 P.M. TUESDAY TO 6:00 A.M. MONDAY.
- 8) FOR CHRISTMAS, BETWEEN THE HOURS OF 7:00 P.M. THE FRIDAY BEFORE THE WEEK OF CHRISTMAS DAY AND 6:00 A.M. THE FOLLOWING TUESDAY AFTER THE WEEK OF CHRISTMAS.

### LANE AND SHOULDER CLOSURE REQUIREMENTS

- C) REMOVE LANE CLOSURE DEVICES FROM THE LANE WHEN WORK IS NOT BEING PERFORMED BEHIND THE LANE CLOSURE OR WHEN A LANE CLOSURE IS NO LONGER NEEDED, OR AS DIRECTED BY THE ENGINEER.
- D) WHEN PERSONNEL AND/OR EQUIPMENT ARE WORKING WITHIN 15 FT OF AN OPEN TRAVEL LANE, CLOSE THE NEAREST OPEN SHOULDER USING ROADWAY STANDARD DRAWING NO. 1101.04 UNLESS THE WORK AREA IS PROTECTED BY BARRIER OR GUARDRAIL OR A LANE CLOSURE IS INSTALLED.
- E) WHEN PERSONNEL AND/OR EQUIPMENT ARE WORKING ON THE SHOULDER ADJACENT TO AN UNDIVIDED FACILITY AND WITHIN 5 FT OF AN OPEN TRAVEL LANE, CLOSE THE NEAREST OPEN TRAVEL LANE USING ROADWAY STANDARD DRAWING 1101.01, SHEET 1 UNLESS THE WORK AREA IS PROTECTED BY BARRIER OR GUARDRAIL.
- F) WHEN PERSONNEL AND/OR EQUIPMENT ARE WORKING ON THE SHOULDER ADJACENT TO A DIVIDED FACILITY AND WITHIN 10 FT OF AN OPEN TRAVEL LANE, CLOSE THE NEAREST OPEN TRAVEL LANE USING SHEET TCP-4 UNLESS THE WORK AREA IS PROTECTED BY BARRIER OR GUARDRAIL.
- G) DO NOT WORK SIMULTANEOUSLY WITHIN 15 FT ON BOTH SIDES OF AN OPEN TRAVELWAY RAMP OR LOOP WITHIN THE SAME LOCATION UNLESS PROTECTED WITH GUARDRAIL OR BARRIER.

### TRAFFIC PATTERN ALTERATIONS

H) NOTIFY THE ENGINEER TWENTY ONE (21) CALENDAR DAYS PRIOR TO ANY TRAFFIC PATTERN ALTERATION.


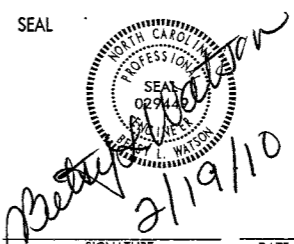
### SIGNING

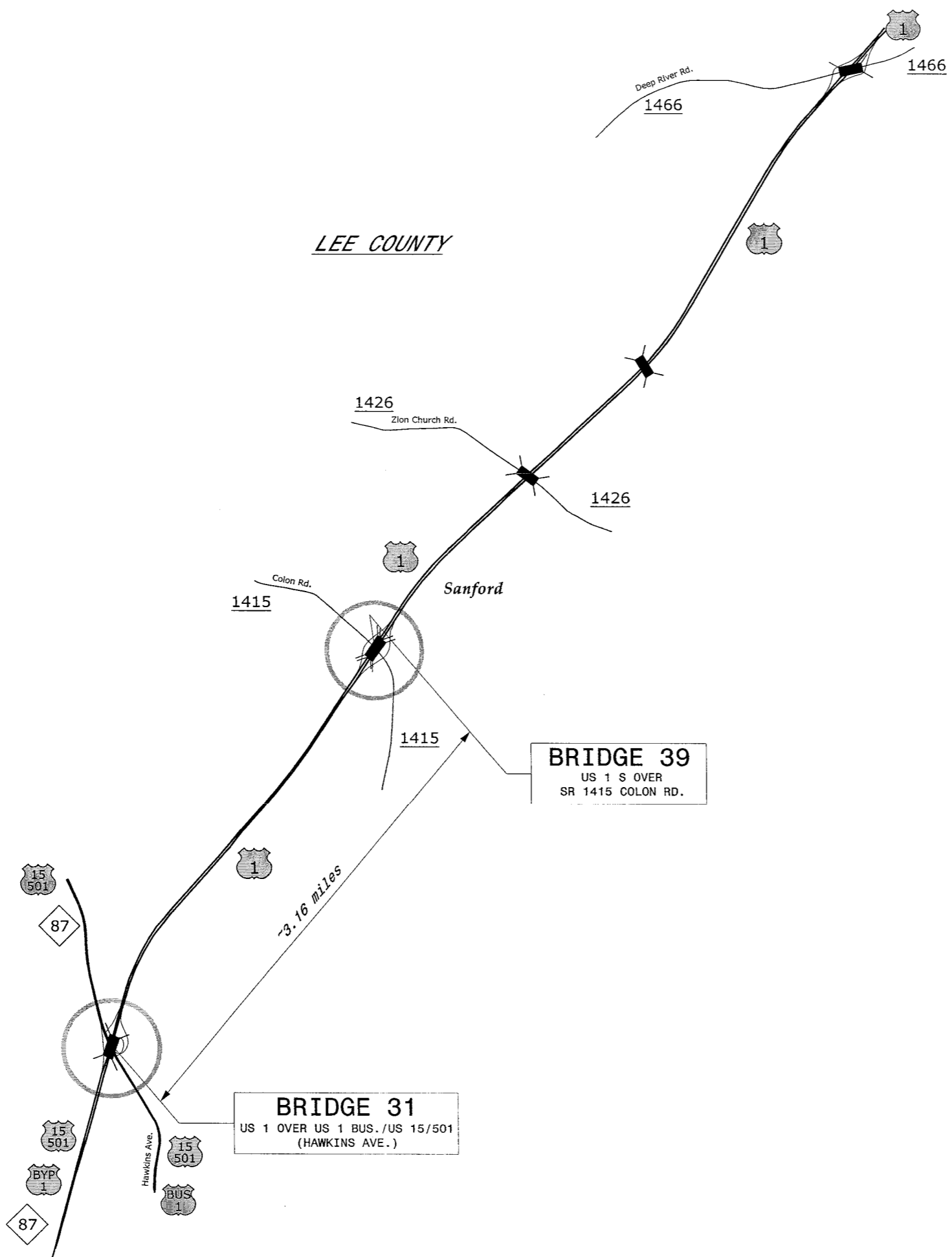
I) ENSURE ALL SIGNING IS IN PLACE PRIOR TO ALTERING ANY TRAFFIC PATTERN.

### MISCELLANEOUS

- J) DO NOT PERFORM WORK FROM THE ROADWAY ON TOP OF THE STRUCTURE.
- K) ENSURE THE OVERSIZE/OVERWEIGHT PERMIT UNIT (919) 733-4740 HAS BEEN ADVISED OF THE ONGOING TRAFFIC OPERATIONS THROUGH THE DIVISION OFFICE.

2/13/2010  
L:\TrafficControl\B-4700AW Lee\TCP\Plan Sheets\B-4700AW.tcp.psh.02.dgn  
kwt/ek/amp

 <b>Stantec</b> <small>Stantec Consulting Services Inc. Suite 300, 801 Jones Franklin Road Raleigh, NC 27608 Tel. 919.851.6866 Fax. 919.851.7024 www.stantec.com</small>	SEAL		<h3>PROJECT NOTES GENERAL NOTES</h3>									
	SIGNATURE	DATE	<table border="1" style="width: 100%; border-collapse: collapse;"> <tr> <td style="width: 50%;">SCALE: NONE</td> <td style="width: 50%;">REVISIONS</td> </tr> <tr> <td>DATE: FEB. 2010</td> <td></td> </tr> <tr> <td>DWG. BY: K LW</td> <td></td> </tr> <tr> <td>DESIGN BY: BLW</td> <td></td> </tr> <tr> <td>REVIEWED BY: BLW</td> <td></td> </tr> </table>	SCALE: NONE	REVISIONS	DATE: FEB. 2010		DWG. BY: K LW		DESIGN BY: BLW		REVIEWED BY: BLW
SCALE: NONE	REVISIONS											
DATE: FEB. 2010												
DWG. BY: K LW												
DESIGN BY: BLW												
REVIEWED BY: BLW												



**STEP 1:**

PERFORM BRIDGE PAINTING OPERATIONS AS SHOWN IN THE CONTRACT AND CONSTRUCTION PLANS. PERFORM WORK IN ACCORDANCE WITH "NCDOT STANDARD SPECIFICATIONS FOR ROADS AND STRUCTURES-JULY 2006".

WHEN WORKING ON BRIDGE #31, USE SHEET TCP-5 TO IMPLEMENT LANE CLOSURES ALONG US 15/501.

WHEN RIGHT LANE CLOSURES ENCR OACH THROUGH THE VICINITY OF AN ENTRANCE RAMP AT BRIDGE #31, USE SHEET TCP-4 IN CONJUNCTION WITH A RIGHT LANE CLOSURE SHEET TCP-5.

MAINTAIN EXIT AND ENTRANCE LOOPS AND RAMP S OPEN AT ALL TIMES FOR ALL INTERCHANGES ON THE PROJECT UNLESS OTHERWISE DIRECTED BY THE ENGINEER.

WHEN WORKING ON BRIDGE #39, USE TEMPORARY FLAGGER OPERATION LANE CLOSURES ON SR 1415 COLON RD. AS SHOWN ON ROADWAY STANDARD DRAWING 1101.02 SHEET 1 OF 9.

AT THE END OF EACH DAY'S OPERATIONS MOVE EQUIPMENT TO STAGING AREA AT LEAST 40 FEET AWAY FROM ANY TRAVEL LANES AS APPROVED BY THE ENGINEER AND REMOVE LANE CLOSURES. WHEN NOT BEING USED TO CLOSE A LANE, DRUMS MAY EITHER BE TOTALLY REMOVED OR BE MOVED TO OUTSIDE OF SHOULDER SUCH THAT THEY DO NOT CLOSE THE SHOULDER.

**STEP 2:**

UPON COMPLETION OF THE PROJECT, REMOVE ALL TRAFFIC CONTROL DEVICES.

C:\1972010\TrafficControl\B-4700AW\_Lee\TCP\Plan\_Sheets\B-4700AW\_tcp\_psh\_03.dgn  
 1/19/2010 10:16:06 AM  
 K. WATSON

**Stantec**  
 Stantec Consulting Services Inc.  
 Suite 300, 801 Jones Franklin Road  
 Raleigh, NC  
 27606  
 Tel. 919.851.6868  
 Fax. 919.851.7024  
 www.stantec.com

SEAL

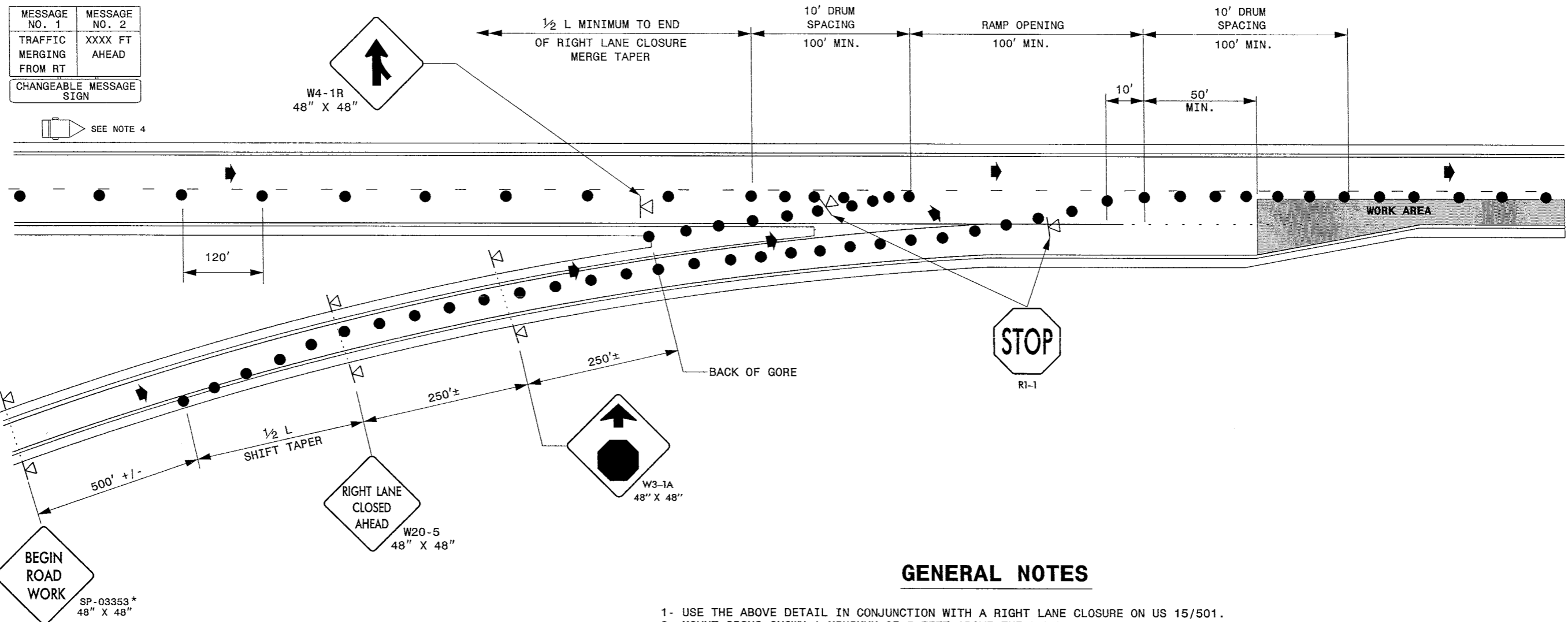
K. WATSON  
 PROFESSIONAL ENGINEER  
 STATE OF NORTH CAROLINA  
 License No. 002449  
 Expires 12/31/10

[Signature]  
 2/19/10  
 SIGNATURE DATE

**LEE COUNTY BRIDGE PAINTING  
 VICINITY MAP  
 TRAFFIC CONTROL PHASING**

SCALE: NONE		REVISIONS
DATE: FEB. 2010		
DWG. BY: K LW		
DESIGN BY: BLW		
REVIEWED BY: BLW		
CADD FILE		

MESSAGE NO. 1	MESSAGE NO. 2
TRAFFIC MERGING FROM RT	XXXX FT AHEAD
CHANGEABLE MESSAGE SIGN	



### GENERAL NOTES

- 1- USE THE ABOVE DETAIL IN CONJUNCTION WITH A RIGHT LANE CLOSURE ON US 15/501.
- 2- MOUNT SIGNS SHOWN A MINIMUM OF 5 FEET ABOVE THE PAVEMENT ELEVATION.
- 3- CLOSE THE RIGHT LANE SUFFICIENTLY IN ADVANCE TO STABILIZE MOTOR VEHICLE TRAFFIC FLOW BEFORE THE MERGE.
- 4- COORDINATE WITH THE ENGINEER FOR LOCATION OF CMS.
- 5- USE THE ABOVE DETAIL ALONG US 15/501 FOR THE FOLLOWING SITUATION:

BRIDGE NO. 31 LOOP FROM US 1 NB TO US 15/501 NB

### LEGEND

- CHANGEABLE MESSAGE SIGN (CMS)
- DRUM
- PORTABLE SIGN
- DIRECTION OF TRAFFIC FLOW

Stantec Consulting Services Inc.  
Suite 300, 801 Jones Franklin Road  
Raleigh, NC 27605  
Tel. 919.851.6866  
Fax. 919.851.7024  
www.stantec.com

SEAL

*Gregory L. Watson*  
2/19/10

SIGNATURE DATE

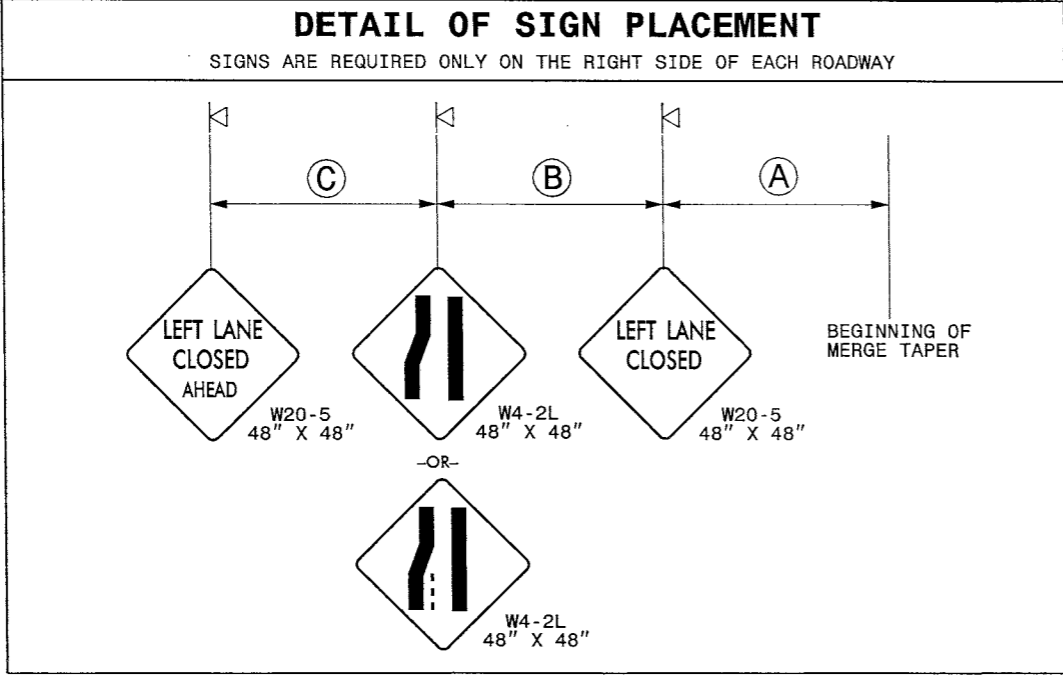
### RIGHT LANE CLOSURES THROUGH ENTRANCE RAMP

SCALE:	NONE
DATE:	FEB. 2010
DWG. BY:	KLW
DESIGN BY:	BLW
REVIEWED BY:	BLW

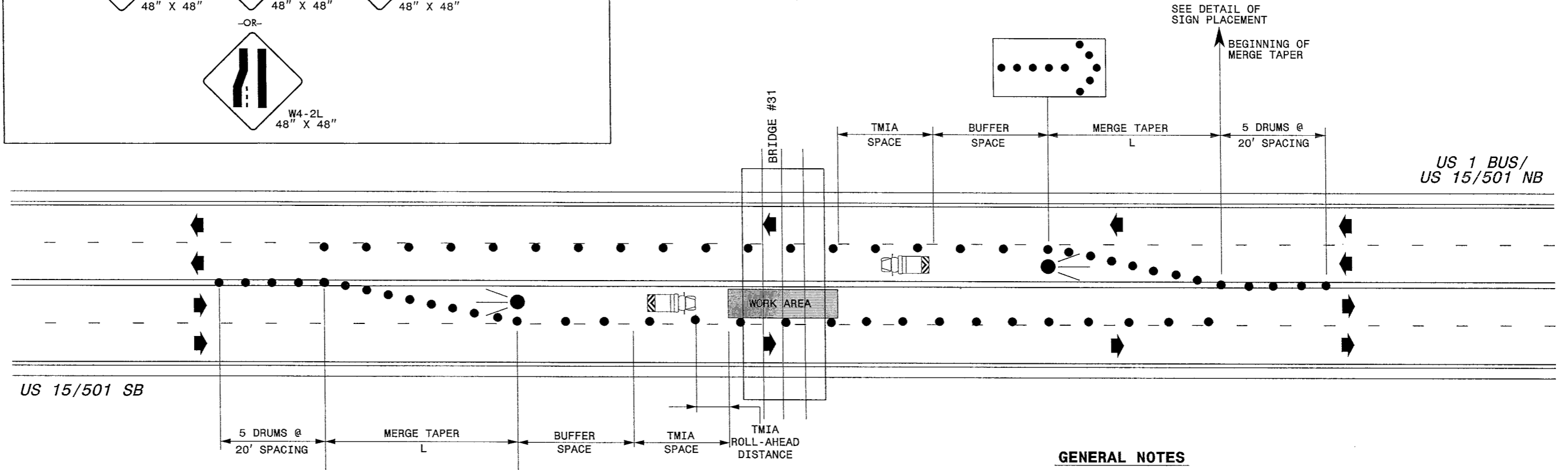


REVISIONS	

2/19/2010 J:\TrafficControl\B-4700AW Lee\TCP\Plan Sheets\B-4700AW\_tcp\_psh\_04.dgn lwtskemp

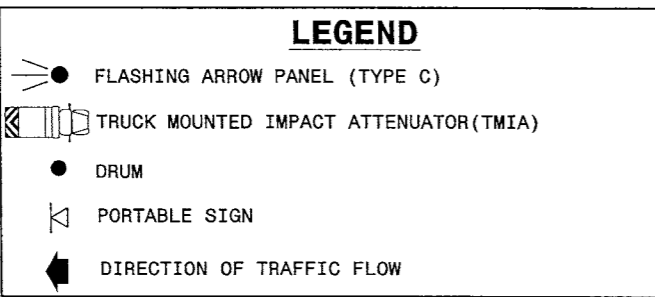


## LEFT LANE CLOSURE



### GENERAL NOTES

- USE THE ABOVE DETAIL FOR APPLICATION OF LANE CLOSURES IN THE VICINITY OF BRIDGE #31.
- FOR RIGHT LANE CLOSURE ON SB APPROACH OF US 15/501, USE DEVICES AS SHOWN ON RSD 1101.02 SHEET 3 OF 9 WITH THE EXCEPTION THAT APPROACH WARNING SIGNS ARE NOT REQUIRED TO BE MOUNTED ON THE LEFT SIDE OF THE ROADWAY, AND THE USE OF A CMS IS NOT REQUIRED UNLESS DIRECTED BY THE ENGINEER.  
  
FOR RIGHT LANE CLOSURE ON NB APPROACH OF US 15/501, DO NOT ALLOW RIGHT LANE TO ORIGINATE. USE DEVICES AS SHOWN ON RSD 1101.02 SHEET 3 OF 9 WITH THE EXCEPTION THAT APPROACH WARNING SIGNS ARE NOT REQUIRED TO BE MOUNTED ON THE LEFT SIDE OF THE ROADWAY, AND THE USE OF A CMS IS NOT REQUIRED UNLESS DIRECTED BY THE ENGINEER. IN ADDITION, "L" MERGE TAPER DISTANCE IS NOT REQUIRED SINCE LANE IS NOT BEING ALLOWED TO ORIGINATE, AND THE FLASHING ARROW PANEL IS OPTIONAL.
- REFER TO NOTES ON RSD 1101.02 SHEET 3 OF 9.



**Stantec**  
 Stantec Consulting Services Inc.  
 Suite 300, 801 Jones Franklin Road  
 Raleigh, NC  
 27608  
 Tel. 919.851.8866  
 Fax. 919.851.7024  
 www.stantec.com

SEAL

*Robert Watson*  
 2/19/10

SIGNATURE DATE

### TYPICAL 2-LANE, 2-WAY LANE CLOSURES ON US 15/501 (HAWKINS AVE.)

SCALE: NONE		REVISIONS
DATE: FEB. 2010		
DESIGN BY: KLW		
REVIEWED BY: BLW		

2/19/2010  
 J:\Traffic\TrafficControl\B-4700AW Lee\TCP\Plan Sheets\B-4700AW.tcp.psh.05.dgn  
 karekcomp